

REPRODUCTION IN ORGANISMS-I

PYQ

AIPMT 2009

1. Vegetative propagation in mint occurs by:-
 (1) Offset (2) Rhizome
 (3) Sucker (4) Runner

AIPMT Mains 2010

2. Vegetative propagation in *Pistia* occurs by:-
 (1) Stolon (2) Offset
 (3) Runner (4) Sucker

AIPMT 2011

3. What is common between vegetative reproduction and apomixis?
 (1) Both are applicable to only dicot plants
 (2) Both bypass the flowering phase
 (3) Both occur round the year
 (4) Both produce progeny identical to the parent

AIPMT 2012

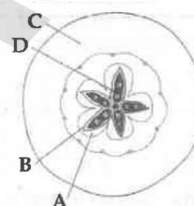
4. Which one of the following is common to multicellular fungi, filamentous algae and protonema of mosses?
 (1) Diplontic life cycle
 (2) Members of kingdom plantae
 (3) Mode of Nutrition
 (4) Multiplication by fragmentation

AIPMT 2013

5. Product of sexual reproduction generally generates
 (1) Prolonged dorman
 (2) New genetic combination leading to variation
 (3) Large biomass
 (4) Longer viability of seeds

NEET 2022

6. Which part of the fruit, labelled in the given figure makes it a false fruit?



- (1) B → Endocarp (2) C → Thalamus
 (3) D → Seed (4) A → Mesocarp
7. Match list-I with list-II:
List-I (a) *Chlamydomonas* (b) *Penicillium* (c) *Hydra* (d) Sponge
List-II (i) Conidia (ii) Zoospores (iii) Gemmules (iv) Buds
- Choose the correct answer from the options given below:
 (1) (a) - (i), (b) - (iv), (c) - (iii), (d) - (ii)
 (2) (a) - (ii), (b) - (i), (c) - (iv), (d) - (iii)
 (3) (a) - (iii), (b) - (ii), (c) - (i), (d) - (iv)
 (4) (a) - (iv), (b) - (iii), (c) - (ii), (d) - (i)

EXERCISE-II (Previous Year Questions)

ANSWER KEY

Question	1	2	3	4	5	6	7
Answer	3	2	4	4	2	2	2