

ANIMAL TISSUE PYQ

EXERCISE -II

AIPMT 2006

- Areolar connective tissue joins –
 - Fat body with muscles
 - Integument with muscles
 - Bones with muscles
 - Bones with bones
- Mast cells secrete –
 - Hippurin
 - Myoglobin
 - Histamine
 - Hemoglobin

AIPMT 2007

- In which one of the following preparations are you likely to come across cell junctions most frequently?
 - Hyaline cartilage
 - Ciliated epithelium
 - Thrombocytes
 - Tendon

AIPMT 2009

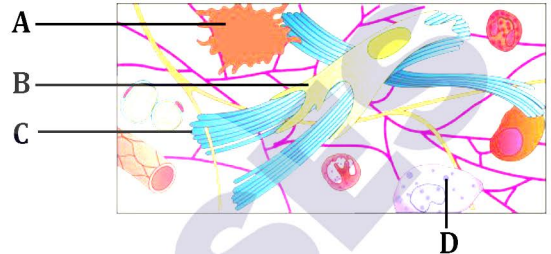
- The cell junctions called tight, adhering and gap junctions are found in :-
 - Neural tissue
 - Muscular tissue
 - Connective tissue
 - Epithelial tissue
- The kind of tissue that forms the supportive structure in our pinna (external ears) is also found in :-
 - Tip of the nose
 - Vertebrae
 - Nails
 - Ear ossicles
- The epithelial tissue present on the inner surface of bronchioles and fallopian tubes is:-
 - Squamous
 - Cuboidal
 - Glandular
 - Ciliated

AIPMT-Pre 2010

- The kind of epithelium which forms the inner walls of blood vessels is :
 - squamous epithelium
 - cuboidal epithelium
 - columnar epithelium
 - ciliated columnar epithelium

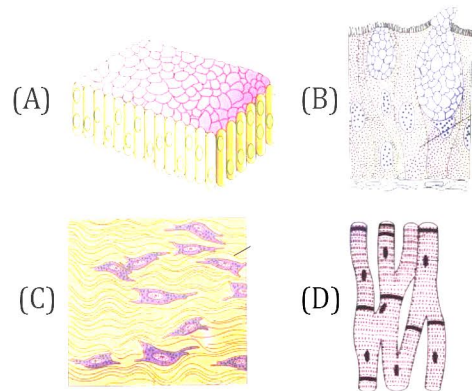
AIPMT-Mains 2012

- Given below is the diagrammatic sketch of a certain type of connective tissue. Identify the parts labelled A, B, C and D, and select the right option about them.



Options :

- A–Macrophage, B–Collagen fibres, C–Fibroblast, D–Mast cell
 - A–Mast cell, B–Collagen fibres, C–Fibroblast, D–Macrophage
 - A–Macrophage, B–Fibroblast, C–Collagen fibres, D–Mast cell
 - A–Mast cell, B–Macrophage, C–Fibroblast, D–Collagen fibres
- The four sketches (A, B, C and D) given below, represent four different types of animal tissues. Which one of these is correctly identified in the options given, along with its correct location and function?



		Tissue	Location	Function
(1)	(D)	Smooth muscle tissue	Heart	Heart contraction
(2)	(A)	Columnar epithelium	Nephron	Secretion and absorption
(3)	(B)	Glandular epithelium	Intestine	Secretion
(4)	(C)	Collagen fibres	cartilage	Attach skeletal muscles to bones

10. The supportive skeletal structures in the human external ears and in the nose tip are examples of :-

- (1) bone (2) cartilage
(3) ligament (4) areolar tissue

AIPMT 2014

11. Choose the correctly matched pair :-
- (1) Tendon–Specialized connective tissue
(2) Adipose tissue – Dense connective tissue
(3) Areolar tissue – Loose connective tissue
(4) Cartilage–Loose connective tissue

Re-AIPMT 2015

12. The function of the gap junction is to :
- (1) stop substance from leaking across a tissue
(2) performing cementing to keep neighbouring cells together
(3) Facilitate communication between adjoining cells by connecting the cytoplasm for rapid transfer of ions, small molecules and some large molecules
(4) separate two cells from each other.

NEET-I 2016

13. Which type of tissue correctly matches with its location ?

	Tissue	Location
(1)	Smooth muscle	Wall of intestine
(2)	Areolar tissue	Tendons
(3)	Transitional epithelium	Tip nose
(4)	Cuboidal epithelium	Lining of stomach

14. Connective tissues are derived from embryonic
- (1) Ectoderm (2) Endoderm
(3) Endo mesoderm (4) Mesoderm

NEET-UG 2019

15. The ciliated epithelial cells are required to move particles or mucus in a specific direction. In humans, these cells are mainly present in :

- (1) Bile duct and Bronchioles
(2) Fallopian tubes and Pancreatic duct
(3) Eustachian tube and Salivary duct
(4) Bronchioles and Fallopian tubes

NEET-UG 2019 (Odisha)

16. Match the following cell structure with its characteristic feature:

(a)	Tight junctions	(i)	Cement neighbouring cells together to form sheet
(b)	Adhering Junctions	(ii)	Transmit information through chemical to another cells
(c)	Gap junctions	(iii)	Establish a barrier to prevent leakage of fluid across epithelial cells
(d)	Synaptic junctions	(iv)	Cytoplasmic channels to facilitate communication between adjacent cells

Select correct option from the following

- (1) (a)-(ii), (b)-(iv), (c)-(i), d-(iii)
(2) (a)-(iv), (b)-(ii), (c)-(i), d-(iii)
(3) (a)-(iii), (b)-(i), (c)-(iv), d-(ii)
(4) (a)-(iv), (b)-(iii), (c)-(i), d-(ii)

NEET-UG 2020 (COVID-19)

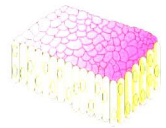

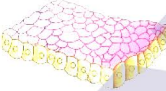
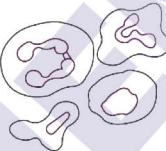
17. Select the incorrectly matched pair from following:
- (1) Chondrocytes - Smooth muscle cells
(2) Neurons - Nerve cells
(3) Fibroblast - Areolar tissue
(4) Osteocytes - Bone cells

NEET-UG 2020

18. Goblet cells of alimentary canal are modified from :
- (1) Compound epithelial cells
 - (2) Squamous epithelial cells
 - (3) Columnar epithelial cells
 - (4) Chondrocytes
19. Cuboidal epithelium with brush border of microvilli is found in :
- (1) eustachian tube
 - (2) lining of intestine
 - (3) ducts of salivary glands
 - (4) proximal convoluted tubule of nephron

NEET-UG 2021 (Paper-2)

20. Match the following and choose the correct combination.

Column-I (Figure)		Column-II (Character)	
a.		i.	Component of connective tissue
b.		ii.	Found in duct of glands
c.		iii.	Secretion and absorption
d.		iv.	Functioning cannot be directly controlled

- (1) a-ii, b-iii, c-i, d-iv
- (2) a-iii, b-iv, c-ii, d-i
- (3) a-iv, b-iii, c-ii, d-i
- (4) a-i, b-ii, c-iv, d-iii

NEET-UG 2022

21. Which of the following is present between the adjacent bones of the vertebral column?
- (1) Cartilage
 - (2) Areolar tissue
 - (3) Smooth muscle
 - (4) Intercalated discs
22. Which of the following is **not** a connective tissue?
- (1) Adipose tissue
 - (2) Cartilage
 - (3) Neuroglia
 - (4) Blood

Re-NEET-UG 2022

23. Which of the following types of epithelium is present in the bronchioles and Fallopian tubes?
- (1) Simple squamous epithelium
 - (2) Simple columnar epithelium
 - (3) Ciliated epithelium
 - (4) Stratified squamous epithelium

Exercise - II (Previous Year Questions)

ANSWER KEY

Question	1	2	3	4	5	6	7	8	9	10	11	12	13	14	15
Answer	2	3	2	4	1	4	1	3	3	2	3	3	1	4	4
Question	16	17	18	19	20	21	22	23							
Answer	3	1	3	4	2	1	3	3							