

**Animal Kingdom
PYQ**

Exercise - II

AIPMT 2006

1. What is common about *Trypanosoma*, *Noctiluca*, *Monocystis* and *Giardia* ?
(1) These are all parasites
(2) These are all unicellular protists
(3) They have flagella
(4) They produce spores
2. Which one of the following is a matching set of a phylum and its three examples ?
(1) Porifera : *Spongilla*, *Euplectella*, *Pennatula*
(2) Cnidaria : *Bonellia*, *Physalia*, *Aurelia*
(3) Platyhelminthes : *Planaria*, *Schistosoma*, *Enterobius*
(4) Mollusca : *Loligo*, *Teredo*, *Octopus*
3. Metameric segmentation is the characteristic of-
(1) Mollusca and Chordata
(2) Platyhelminthes and Arthropoda
(3) Echinodermata and Annelida
(4) Annelida and Arthropoda
4. Two common characters found in Centipede, Cockroach and Crab are -
(1) Book lungs and antennae
(2) Compound eyes and anal cerci
(3) Jointed legs and chitinous exoskeleton
(4) Green gland and tracheae
5. Biradial symmetry and lack of cnidoblasts are the characteristic of -
(1) *Hydra* and *Starfish*
(2) *Starfish* and Sea Anemone
(3) *Ctenoplana* and *Beroe*
(4) *Aurelia* and *Paramoecium*
6. Which one of the following has an open circulatory system ?
(A) *Octopus*
(B) *Pheretima*
(C) *Periplaneta*
(D) *Hirudinaria*
(1) A & B (2) B & C
(3) C & D (4) A & D

7. In which one of the following sets of animals all the four give birth to young ones ?
(1) Kangaroo, Hedgehog, Dolphin, Loris
(2) Lion, Bat, Whale, Ostrich
(3) Platypus, Penguin, Bat, *Hippopotamus*
(4) Shrew, Bat, Cat, Kiwi

AIPMT 2007

8. Which one of the following is a matching pair of a body feature and the animal possessing it?
(1) Ventral heart - Scorpion
(2) Post-anal tail - Octopus
(3) Ventral central nervous system - Leech
(4) Pharyngeal gill slits absent in embryo - *Chamaeleon*
9. What is true about *Nereis*, Scorpion, Cockroach and Silver fish ?
(1) They all belong to the same phylum
(2) They all have paired jointed appendages
(3) They all possess dorsal heart
(4) None of them is aquatic
10. Which one of the following pairs is mismatched?
(1) *Bombyx mori* - Silk
(2) *Pila globosa* - Pearl
(3) *Apis indica* - Honey
(4) *Kenia lacca* - Lac
11. Which of the following pairs are correctly matched ?

Animals	Morphological features
(A) Crocodile	4-chambered heart
(B) Sea Urchin	Parapodia
(C) <i>Obelia</i>	Metagenesis
(D) Lemur	Thecodont

(1) Only A and B (2) A, C and D
(3) B, C and D (4) Only A and D
12. What is common between parrot, platypus and kangaroo ?
(1) Ovoparity
(2) Homoiothermy
(3) Toothless jaws
(4) Functional post-anal tail

AIPMT 2008

13. Which one of the following is not a characteristic of phylum Annelida?
 (1) Closed circulatory system
 (2) Segmentation
 (3) Pseudocoelom
 (4) Ventral nerve cord
14. Which one of the following phyla is correctly matched with its two general characteristics?
 (1) Arthropoda : Body divided into head, thorax and abdomen and respiration by tracheae
 (2) Chordata : Notochord at some stage and separate anal and urinary openings to the outside
 (3) Echinodermata : Pentamerous radial symmetry and mostly internal fertilization
 (4) Mollusca : Normally oviparous and development through a trochophore or veliger larva
15. *Ascaris* is characterized by :
 (1) absence of true coelom but presence of metamerism
 (2) presence of neither true coelom nor metamerism
 (3) presence of true coelom but absence of metamerism
 (4) presence of true coelom and metamerism
16. Which one of the following groups of the three animals each is correctly matched with their one characteristic morphological feature?

Animals	Morphological feature
----------------	------------------------------

- | | |
|--|--|
| (1) Liver fluke,
Sea anemone,
Sea cucumber | – Bilateral symmetry |
| (2) Centipede,
Prawn, Sea urchin | – Joined appendages |
| (3) Scorpion, Spider,
Cockroach | – Ventral solid central nervous system |
| (4) Cockroach,
Locust, <i>Taenia</i> | – Metameric segmentation |

AIPMT 2009

17. Which one of the following groups of animals is bilaterally symmetrical and triploblastic?
 (1) Sponges
 (2) Coelenterates (Cnidarians)
 (3) Aschelminthes (round worms)
 (4) Ctenophores
18. *Peripatus* is a connecting link between :-
 (1) Coelenterata and Porifera
 (2) Ctenophora and Platyhelminthis
 (3) Mollusca and Echinodermata
 (4) Annelida and Arthropoda
19. Which one of the following pairs of animals are 'jawless fishes' ?
 (1) Guppies and hag fishes
 (2) Lampreys and eels
 (3) Mackerals and Rohu
 (4) Lampreys and hag fishes

AIPMT (Pre.) 2010

20. One example of animals having a single opening to the outside that serves both as mouth as well as anus is :-
 (1) *Fasciola*
 (2) *Octopus*
 (3) *Asterias*
 (4) *Herdmania*
21. Which one of the following statement about all the four of *Spongilla*, Leech, Dolphin and Penguin is correct ?
 (1) All are bilaterally symmetrical
 (2) Penguin is homoiothermic while the remaining three are poikilothermic
 (3) Leech is a fresh water form while all others are marine
 (4) *Spongilla* has special collared cells called choanocytes, not found in the remaining three.
22. Which one of the following animals are triploblastic?
 (1) Corals
 (2) Flat worms
 (3) Sponges
 (4) Ctenophores

23. Which one of the following statement about certain given animals is correct ?
- (1) Flat worms (Platyhelminthes) are coelomates
 - (2) Round worms (Aschelminthes) are pseudocoelomates
 - (3) Molluscs are acoelomates
 - (4) Insects are pseudocoelomates

AIPMT (Mains) 2010

24. Crocodile and Penguin are similar to Whale and Dogfish in which one of the following features ?
- (1) Lay eggs and guard them till they hatch
 - (2) Possess bony skeleton
 - (3) Have gill slits at some stage
 - (4) Possess a solid single stranded central nervous system

AIPMT (Pre.) 2011

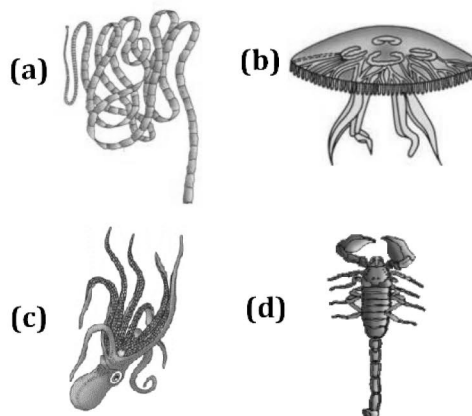
25. Which one of the following groups of animals is correctly matched with its one characteristic feature without even a single exception ?
- (1) Reptilia : possess 3-chambered heart with one incompletely divided ventricle
 - (2) Chordata : possess a mouth provided with an upper and a lower jaw
 - (3) Chondrichthyes : possess cartilaginous endoskeleton
 - (4) Mammalia : give birth to young ones
26. Which one of the following animals is correctly matched with its particular named taxonomic category ?
- (1) Tiger – *tigris*, the species
 - (2) Cuttlefish – Mollusca, a class
 - (3) Humans – Primata, the family
 - (4) Housefly – *Musca*, an order

27. In which one of the following the genus name, its two character and its class/phylum are correctly matched?

Genus name	Two characters	Class/Phylum
(1) <i>Ascaris</i>	(a) Body segmented (b) Males and females distinct	Annelida
(2) <i>Salamendra</i>	(a) A tympanum represents ear (b) Fertilization is external	Amphibia
(3) <i>Pteropus</i>	(a) Skin possesses hair (b) Oviparous	Mammalia
(4) <i>Aurelia</i>	(a) Cnidoblasts (b) Organ level of organization	Coelenterata

AIPMT (Mains) 2011

28. The figure shows four animals (a), (b), (c) and (d). Select the correct answer with respect to a common characteristics of two of these animals.



- (1) (c) and (d) have a true coelom
- (2) (a) and (d) respire mainly through body wall
- (3) (b) and (c) show radial symmetry
- (4) (a) and (b) have cnidoblasts for self defence.

AIPMT (Pre.) 2012

29. In which one of the following, the genus name, its two characters and its phylum are **not correctly** matched, whereas the remaining three are correct?

	Genus name	Two characters	Phylum
(1)	<i>Sycon</i>	(a) Pore bearing (b) Canal system	Porifera
(2)	<i>Periplaneta</i>	(a) Jointed appendages (b) Chitinous exoskeleton	Arthropoda
(3)	<i>Pila</i>	(a) Body segmented (b) Mouth with Radula	Mollusca
(4)	<i>Asterias</i>	(a) Spiny skinned (b) Water vascular system	Echino-dermata

AIPMT (Mains) 2012

30. Which one of the following organisms is scientifically correctly named, correctly printed according to the International Rules of Nomenclature and correctly described?
- (1) *Felis tigris* - The Indian tiger, well protected in Gir forests.
 (2) *E.coli* - Full name *Entamoeba coli*, a commonly occurring bacterium in human intestine.
 (3) *Musca domestica* - The common house lizard, a reptile.
 (4) *Plasmodium falciparum* - A protozoan pathogen causing the most serious type of malaria.
31. Which one of the following categories of animals, is correctly described with no single exception in it?
- (1) All sponges are marine and have collared cells
 (2) All mammals are viviparous and possess diaphragm for breathing

(3) All reptiles possess scales, have a three chambered heart and are cold blooded (poikilothermal)

(4) All bony fishes have four pairs of gills and an operculum on each side

32. Which one of the following pairs of animals are similar to each other pertaining to the feature stated against them?

(1) *Ascaris* and *Ancylostoma* - Metameric segmentation

(2) Sea horse and Flying fish - Cold blooded (poikilothermal)

(3) *Pteropus* and *Ornithorhynchus* - Viviparity

(4) Garden lizard and Crocodile - Three chambered heart

NEET-UG 2013

33. One of the representatives of Phylum Arthropoda is :

(1) flying fish (2) cuttle fish

(3) silver fish (4) puffer fish

34. Which group of animals belong to the same phylum?

(1) Sponge, Sea anemone, Starfish

(2) Malarial parasite, *Amoeba*, Mosquito

(3) Earthworm, Pinworm, Tapeworm

(4) Prawn, Scorpion, *Locusta*

35. Infection of *Ascaris* usually occurs by :

(1) mosquito bite

(2) drinking water containing eggs of *Ascaris*

(3) eating imperfectly cooked pork.

(4) Tse-tse fly

36. Which of the following are correctly matched with respect to their taxonomic classification?

(1) Spiny anteater, sea urchin, sea cucumber - Echinodermata

(2) Flying fish, cuttlefish, silverfish - Pisces

(3) Centipede, millipede, spider, scorpion - Insecta

(4) House fly, butterfly, tsetsefly, silverfish - Insecta

37. Match the name of the animal (column I), with one characteristics (column II), and the phylum/ class (column III) to which it belongs :

	Column I	Column II	Column III
(1)	<i>Adamsia</i>	radially symmetrical	Porifera
(2)	<i>Petromyzon</i>	ectoparasite	Cyclostomata
(3)	<i>Ichthyophis</i>	terrestrial	Reptilia
(4)	<i>Limulus</i>	Body covered by chitinous exoskeleton	Pisces

AIPMT 2014

38. Which one of the following living organisms completely lacks a cell wall?
- (1) Cyanobacteria
 - (2) Sea – fan (*Gorgonia*)
 - (3) *Saccharomyces*
 - (4) Blue–green algae
39. Select the Taxon mentioned that represents both marine and fresh water species :-
- (1) Echinoderms
 - (2) Ctenophora
 - (3) Cephalochordata
 - (4) Cnidaria
40. *Planaria* possess high capacity of :-
- (1) Metamorphosis
 - (2) Regeneration
 - (3) Alternation of generation
 - (4) Bioluminescence
41. A marine cartilaginous fish that can produce electric current is :-
- (1) *Pristis*
 - (2) *Torpedo*
 - (3) *Trygon*
 - (4) *Scoliodon*

AIPMT 2015

42. Which of the following animals is **not** viviparous?
- (1) Elephant
 - (2) Platypus
 - (3) Whale
 - (4) Flying fox (Bat)

43. Which of the following represents the correct combination without any exception?

	Characteristics	Class
(1)	Mouth ventral, gills without operculum; skin with placoid scales; persistent notochord	Chondrichthyes
(2)	Sucking and circular mouth; jaws absent, integument without scales; paired appendages	Cyclostomata
(3)	Body covered with feathers; skin moist and glandular; forelimbs form wings; lungs with air sacs	Aves
(4)	Mammary gland; hair on body; pinnae; two pairs of Limbs	Mammalia

44. The active form of *Entamoeba histolytica* feeds upon:
- (1) mucosa and submucosa of colon only
 - (2) food in intestine
 - (3) blood only
 - (4) erythrocytes; mucosa and submucosa of colon
45. Which of the following endoparasites of humans does show viviparity ?
- (1) *Enterobius vermicularis*
 - (2) *Trichinella spiralis*
 - (3) *Ascaris lumbricoides*
 - (4) *Ancylostoma duodenale*

Re-AIPMT 2015

46. Metagenesis refers to :
- (1) Presence of a segmented body and parthenogenetic mode of reproduction
 - (2) Presence of different morphic forms
 - (3) Alternation of generation between asexual and sexual phases of an organism
 - (4) Occurrence of a drastic change in form during post-embryonic development
47. Which one of the following animals has two separate circulatory pathways ?
- (1) Shark
 - (2) Frog
 - (3) Lizard
 - (4) Whale

48. Body having meshwork of cells, internal cavities lined with food filtering flagellated cells and indirect development are the characteristics of phylum :
- (1) Protozoa (2) Coelenterata
(3) Porifera (4) Mollusca
49. A jawless fish, which lays eggs in fresh water and whose ammocoetes larvae after metamorphosis return to the ocean is :
- (1) *Petromyzon* (2) *Eptatretus*
(3) *Myxine* (4) *Neomyxine*

NEET-I 2016

50. Which of the following characteristic features always holds true for the corresponding group of animals?

(1)	Cartilaginous endoskeleton	Chondrichthyes
(2)	Viviparous	Mammalia
(3)	Possess a mouth with an upper and a lower jaw	Chordata
(4)	3 - chambered heart with one incompletely divided ventricle	Reptilia

51. Which one of the following characteristics is **not** shared by birds and mammals ?
- (1) Ossified endoskeleton
(2) Breathing using lungs
(3) Viviparity
(4) Warm blooded nature

NEET-II 2016

52. Choose the **correct** statement.
- (1) All reptiles have a three-chambered heart.
(2) All pisces have gills covered by an operculum.
(3) All mammals are viviparous.
(4) All cyclostomes do not possess jaws and paired fins.

NEET(UG) 2017

53. An important characteristic that Hemichordates share with Chordates is :
- (1) Ventral tubular nerve cord
(2) Pharynx with gill slits
(3) Pharynx without gill slits
(4) Absence of notochord
54. Which among these is the correct combination of aquatic mammals ?
- (1) Dolphins, Seals, *Trygon*
(2) Whales, Dolphins, Seals
(3) *Trygon*, Whales, Seals
(4) Seals, Dolphins, Sharks
55. In case of poriferans, the spongocoel is lined with flagellated cells called:
- (1) oscula
(2) choanocytes
(3) mesenchymal cells
(4) ostia

NEET(UG) 2018

56. Which of the following animals does **not** undergo metamorphosis ?
- (1) Earthworm (2) Tunicate
(3) Moth (4) Starfish
57. Identify the vertebrate group of animals characterized by crop and gizzard in its digestive system.
- (1) Amphibia (2) Reptilia
(3) Aves (4) Osteichthyes
58. Which one of these animals is **not** a homeotherm?
- (1) *Macropus*
(2) *Chelone*
(3) *Camelus*
(4) *Psittacula*
59. Ciliates differ from all other protozoans in
- (1) using flagella for locomotion
(2) having a contractile vacuole for removing excess water
(3) using pseudopodia for capturing prey
(4) having two types of nuclei

NEET(UG) 2019

60. Match the following organisms with their respective characteristics :-

- | | |
|--------------------------|-------------------------|
| (a) <i>Pila</i> | (i) Flame cells |
| (b) <i>Bombyx</i> | (ii) Comb plates |
| (c) <i>Pleurobrachia</i> | (iii) Radula |
| (d) <i>Taenia</i> | (iv) Malpighian tubules |

Select the **correct** option from the following:-

- | | (a) | (b) | (c) | (d) |
|-----|-------|------|-------|------|
| (1) | (iii) | (ii) | (i) | (iv) |
| (2) | (iii) | (iv) | (ii) | (i) |
| (3) | (ii) | (iv) | (iii) | (i) |
| (4) | (iii) | (ii) | (iv) | (i) |

61. Consider following features:

- Organ system level of organisation
- Bilateral symmetry
- True coelomates with segmentation of body

Select the **correct** option of animal groups which possess all the above characteristics.

- Annelida, Arthropoda and Chordata
- Annelida, Arthropoda and Mollusca
- Arthropoda, Mollusca and Chordata
- Annelida, Mollusca and Chordata

NEET(UG) 2019 (Odisha)

62. Match the following genera with their respective phylum:

- | | |
|---------------------|----------------------|
| (a) <i>Ophura</i> | (i) Mollusca |
| (b) <i>Physalia</i> | (ii) Platyhelminthes |
| (c) <i>Pinctada</i> | (iii) Echinodermata |
| (d) <i>Planaria</i> | (iv) Coelenterata |

Select the correct option:

- (a)-(iv), (b)-(i), (c)-(iii), d-(ii)
- (a)-(iii), (b)-(iv), (c)-(i), d-(ii)
- (a)-(i), (b)-(iii), (c)-(iv), d-(ii)
- (a)-(iii), (b)-(iv), (c)-(ii), d-(i)

63. Which of the following animals are true coelomates with bilateral symmetry?

- Adult Echinoderms
- Aschelminthes
- Platyhelminthes
- Annelids

NEET(UG) - 2020

64. Match the following columns and select the **correct** option.

Column -I**Column -II**

- | | |
|-------------------------------|----------------------|
| (a) 6 -15 pairs of gill slits | (i) <i>Trygon</i> |
| (b) Heterocercal caudal fin | (ii) Cyclostomes |
| (c) Air Bladder | (iii) Chondrichthyes |
| (d) Poison sting | (iv) Osteichthyes |

- | | (a) | (b) | (c) | (d) |
|-----|-------|-------|-------|------|
| (1) | (i) | (iv) | (iii) | (ii) |
| (2) | (ii) | (iii) | (iv) | (i) |
| (3) | (iii) | (iv) | (i) | (ii) |
| (4) | (iv) | (ii) | (iii) | (i) |

65. Which of the following statements are true for the phylum-Chordata ?

- In Urochordata notochord extends from head to tail and it is present throughout their life.
- In Vertebrata notochord is present during the embryonic period only.
- Central nervous system is dorsal and hollow.
- Chordata is divided into 3 subphyla : Hemichordata, Tunicata and Cephalochordata.

- | | |
|-----------------|-----------------|
| (1) (b) and (c) | (2) (d) and (c) |
| (3) (c) and (a) | (4) (a) and (b) |

66. Match the following columns and select the **correct** option.

Column-I**Column-II**

- | | |
|--|-------------------------|
| (a) Gregarious, polyphagous pest | (i) <i>Asterias</i> |
| (b) Adult with radial symmetry and larva with bilateral symmetry | (ii) Scorpion |
| (c) Book lungs | (iii) <i>Ctenoplana</i> |
| (d) Bioluminescence | (iv) <i>Locusta</i> |

- | | (a) | (b) | (c) | (d) |
|-----|-------|-------|-------|-------|
| (1) | (ii) | (i) | (iii) | (iv) |
| (2) | (i) | (iii) | (ii) | (iv) |
| (3) | (iv) | (i) | (ii) | (iii) |
| (4) | (iii) | (ii) | (i) | (iv) |

67. Bilaterally symmetrical and acoelomate animals are exemplified by:

- (1) Annelida (2) Ctenophora
(3) Platyhelminthes (4) Aschelminthes

NEET (UG)-2020 (COVID-19)

68. Which of the following options does correctly represent the characteristic features of phylum Annelida ?

- (1) Triploblastic, unsegmented body and bilaterally symmetrical.
(2) Triploblastic, segmented body and bilaterally symmetrical.
(3) Triploblastic, flattened body and acoelomate condition.
(4) Diploblastic, mostly marine and radially symmetrical.

69. Match the following group of organisms with their respective distinctive characteristics and select the correct option :

Organisms Characteristics

- (a) Platyhelminthes (i) Cylindrical body with no segmentation
(b) Echinoderms (ii) Warm blooded animals with direct development
(c) Hemichordates (iii) Bilateral symmetry with incomplete digestive system
(d) Aves (iv) Radial symmetry with Indirect development

- (1) (a)-(iii), (b)-(iv), (c)-(i), (d)-(ii)
(2) (a)-(ii), (b)-(iii), (c)-(iv), (d)-(i)
(3) (a)-(iv), (b)-(i), (c)-(ii), (d)-(iii)
(4) (a)-(i), (b)-(ii), (c)-(iii), (d)-(iv)

70. All vertebrates are chordates but all chordates are not vertebrates, why ?

- (1) Notochord is replaced by vertebral column in adult of some chordates.
(2) Ventral hollow nerve cord remains throughout life in some chordates.
(3) All chordates possess vertebral column.
(4) All chordates possess notochord throughout their life.

71. Match the following columns and select the correct option :

Column - I

- (a) *Aptenodytes*
(b) *Pteropus*
(c) *Pterophyllum*
(d) *Petromyzon*

Column - II

- (i) Flying fox
(ii) Angel fish
(iii) Lamprey
(iv) Penguin

- (1) (a)-(iii), (b)-(iv), (c)-(ii), (d)-(i)
(2) (a)-(iii), (b)-(iv), (c)-(i), (d)-(ii)
(3) (a)-(iv), (b)-(i), (c)-(ii), (d)-(iii)
(4) (a)-(ii), (b)-(i), (c)-(iv), (d)-(iii)

NEET (UG) - 2021

72. Read the following statements.

- (a) Metagenesis is observed in Helminths.
(b) Echinoderms are triploblastic and coelomate animals.
(c) Round worms have organ-system level of body organization.
(d) Comb plates present in ctenophores help in digestion.
(e) Water vascular system is characteristic of echinoderms.

Choose the **correct** answer from the options given below.

- (1) (c), (d) and (e) are correct
(2) (a), (b) and (c) are correct
(3) (a), (d) and (e) are correct
(4) (b), (c) and (e) are correct

73. Match **List - I** with **List - II**.

	List-I		List-II
(a)	Metamerism	(i)	Coelenterata
(b)	Canal system	(ii)	Ctenophora
(c)	Comb plates	(iii)	Annelida
(d)	Cnidoblasts	(iv)	Porifera

Choose the **correct** answer from the options given below.

- (a) (b) (c) (d)
(1) (iv) (iii) (i) (ii)
(2) (iii) (iv) (i) (ii)
(3) (iii) (iv) (ii) (i)
(4) (iv) (i) (ii) (iii)

74. Match the following:

List-I		List-II	
(a)	<i>Physalia</i>	(i)	Pearl oyster
(b)	<i>Limulus</i>	(ii)	Portuguese Man of War
(c)	<i>Ancylostoma</i>	(iii)	Living fossil
(d)	<i>Pinctada</i>	(iv)	Hookworm

Choose the **correct** answer from the options given below.

- | | (a) | (b) | (c) | (d) |
|-----|------|-------|-------|------|
| (1) | (ii) | (iii) | (i) | (iv) |
| (2) | (iv) | (i) | (iii) | (ii) |
| (3) | (ii) | (iii) | (iv) | (i) |
| (4) | (i) | (iv) | (iii) | (ii) |

75. Which one of the following organisms bears hollow and pneumatic long bones?

- (1) *Neophron* (2) *Hemidactylus*
 (3) *Macropus* (4) *Ornithorhynchus*

NEET (UG) - 2022

76. Nitrogenous waste is excreted in the form of pellet or paste by :

- (1) Salamandra
 (2) Hippocampus
 (3) Pavo
 (4) Ornithorhynchus

77. Given below are two statements : one is labelled as **Assertion (A)** and the other is labelled as **Reason (R)**.

Assertion (A) : All vertebrates are chordates but all chordates are not vertebrates.

Reason (R) : Notochord is replaced by vertebral column in the adult vertebrates.

In the light of the above statements, choose the **most appropriate** answer from the options given below :

- (1) Both **(A)** and **(R)** are correct but **(R)** is **not** the correct explanation of **(A)**
 (2) **(A)** is correct but **(R)** is not correct
 (3) **(A)** is not correct but **(R)** is correct
 (4) Both **(A)** and **(R)** are correct and **(R)** is the correct explanation of **(A)**

78. In which of the following animals, digestive tract has additional chambers like crop and gizzard ?

- (1) *Bufo*, *Balaenoptera*, *Bangarus*
 (2) *Catla*, *Columba*, *Crocodilus*
 (3) *Pavo*, *Psittacula*, *Corvus*
 (4) *Corvus*, *Columba*, *Chameleon*

Re-NEET (UG) - 2022

79. Select the **incorrect** statements with respect to cyclostomes:

- (a) They lack scales and paired fins.
 (b) They have circular mouth with jaws.
 (c) They bear 6-15 pairs of gills
 (d) They migrate to deep sea for spawning.

Choose the **most appropriate answer** from the options given below.

- (1) (a) and (b) only
 (2) (b) and (c) only
 (3) (b) and (d) only
 (4) (a) and (d) only

80. Which of the following animals has three chambered heart?

- (1) *Scoliodon* (2) *Hippocampus*
 (3) *Chelone* (4) *Pteropus*

EXERCISE-II (Previous Year Questions)

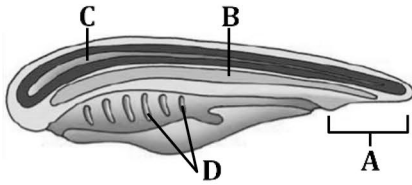
ANSWER KEY

Question	1	2	3	4	5	6	7	8	9	10	11	12	13	14	15
Answer	2	4	4	3	3	3	1	3	3	2	2	2	3	4	2
Question	16	17	18	19	20	21	22	23	24	25	26	27	28	29	30
Answer	3	3	4	4	1	4	2	2	3	3	1	2	1	3	4
Question	31	32	33	34	35	36	37	38	39	40	41	42	43	44	45
Answer	4	2	3	4	2	4	2	2	4	2	2	2	1	4	2
Question	46	47	48	49	50	51	52	53	54	55	56	57	58	59	60
Answer	3	4	3	1	1	3	4	2	2	2	1	3	2	4	2
Question	61	62	63	64	65	66	67	68	69	70	71	72	73	74	75
Answer	1	2	4	2	1	3	3	2	1	1	3	4	3	3	1
Question	76	77	78	79	80										
Answer	3	4	3	3	3										

EXERCISE-III (A) NCERT BASED QUESTIONS

- Which one of the following is a radially symmetrical, blind sac body plan and diploblastic animal?
(1) *Spongilla* (2) *Euspongia*
(3) *Asterias* (4) *Physalia*
- Which one is not a platyhelminthes?
(1) Tapeworm (2) Liver fluke
(3) *Planaria* (4) Hookworm
- Consider the following statements :-
(A) Protochordates are exclusively marine
(B) In cephalochordates, Notochord extends from head to tail region.
(C) In urochordates, Notochord is present only in larval tail.
(D) Cranium and vertebral column are bony in cyclostomates.
Which of the above statement is/are correct?
(1) A alone (2) B, C and D
(3) A, B and C (4) All
- Consider the following characteristic of fishes:-
(A) They have four pairs of gills which are covered by an operculum.
(B) They have air bladder which regulates buoyancy
(C) They are mostly viviparous and development is direct
(D) Their body is streamlined and covered with cycloid/ctenoid scales
Which of the above characteristics regarding bony fishes are correct?
(1) A, B and C (2) C and D
(3) A, B and D (4) B alone
- Which of the following animal is radially symmetrical but has a bilaterally symmetrical larva?
(1) *Ascaris* (Round worm)
(2) *Nereis* (Ring worm)
(3) *Pila* (Apple snail)
(4) *Asterias* (Star fish)
- Identified the correct statement from the following with reference to Amphibians :-
(A) They have internal fertilisation and development is direct.
(B) Amphibian skin is moist and without scales
(C) Their body is divisible into head and trunk
(D) They have three chambered heart
Select the correct answer :-
(1) A and D (2) A and B
(3) B, C and D (4) D alone
- Which of the following pairs are correctly matched?
(A) Poikilothermous - Birds and mammals
(B) Agnatha - *Petromyzon* and *Myxine*
(C) Tunicates - *Ascidia*, *Salpa* and *Doliolum*
(D) Cartilaginous fishes - *Betta* and *Labeo*
(1) A and B (2) A, B and C
(3) B and C (4) A, B and D
- Water vascular system is found in :-
(1) Porifera (2) Echinodermata
(3) Mollusca (4) Elasmobranch
- Match the column :-
(a) *Dentalium* (i) Brittle star
(b) *Ophiura* (ii) Cuttle fish
(c) *Antedon* (iii) Sea Urchin
(d) *Echinus* (iv) Tusk shell
(e) *Sepia* (v) Sea lily
(1) a-(iv), b-(i), c-(iv), d-(ii), e-(iii)
(2) a-(iv), b-(i), c-(v), d-(iii), e-(ii)
(3) a-(i), b-(iv), c-(v), d-(iii), e-(ii)
(4) a-(iv), b-(i), c-(iii), d-(v), e-(ii)
- True coelom and metamerism segmentation in the body is first observed in which of the following phylum
(1) Platyhelminthes
(2) Aschelminthes
(3) Annelida
(4) Arthropoda

24. A schematic representation of a chordate's embryo is shown in the above figure.



The structures marked **A**, **B**, **C** and **D** are respectively :-

- (1) Notochord, Nerve cord, Intestine and gill slits
 (2) Postanal part, Gill slits, Nerve cord and Notochord
 (3) Postanal part, nerve cord, Notochord and Gill
 (4) Post anal part, Notochord, Nervecord and Gill slits.
25. In which one of the following protochordates notochord present only in the tail of larva ?
 (1) *Ascidia* (2) *Balanoglossus*
 (3) *Myxine* (4) *Branchiostoma*
26. In which of the following group notochord present in whole life?
 (1) Hemichordata
 (2) Urochordata
 (3) Cephalochordata
 (4) Vertebrata
27. Match the column-I with the column-II and find out the correct answer :

Column-I**Column-II**

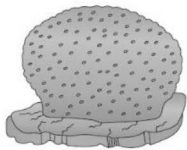
- | | |
|------------------------------------|----------------------|
| (A) Spongocoel | (i) Arthropoda |
| (B) Dorso-ventrally flattened body | (ii) Cnidaria |
| (C) Coelenteron cavity | (iii) Porifera |
| (D) Chitinous exoskeleton | (vi) Platyhelminthes |
- (1) A-iii, B-iv, C-i, D-ii
 (2) A-iv, B-iii, C-ii, D-i
 (3) A-iii, B-iv, C-ii, D-i
 (4) A-ii, B-iv, C-iii, D-i

28. Which of the following is a matching pair ?
 (1) *Ophiura* - Sea lily
 (2) *Octopus* - Cuttle fish
 (3) *Torpedo* - Electric ray
 (4) *Aptenodytes* - Ostrich
29. Which one is not the character of Osteichthyes?
 (1) Terminal mouth
 (2) Gills with operculum
 (3) Body covered by placoid scales
 (4) Air bladder regulate buoyancy.
30. Which one of the following pairs is not correctly matched?
 (1) *Choetopleura* - Chiton
 (2) *Ascaris* - Round worm
 (3) *Wuchereria* - Filaria worm
 (4) *Enterobias* - Hook worm

EXERCISE-III(B) (ANALYTICAL QUESTIONS)

31. The greatest evolutionary change that enabled the land vertebrates to be completely free from water, was the development of -
 (1) four appendages
 (2) lungs
 (3) cleidoic eggs
 (4) four chambered heart
32. A mammal which completely lives in water is?
 (1) Bear (2) Camel
 (3) Whale (4) Rhinoceros
33. Which of the following does not make a nest of its own ?
 (1) Crow
 (2) Parrot
 (3) Cuckoo (Koel)
 (4) Sparrow
34. How many in the given examples of animals are Coelentrates?
Physalia, Obelia, Plannaria, Pennatula, Gorgonia, Pleurobrachia, Meandrina and Nereis
 (1) Three (2) Four
 (3) Five (4) Six

35. Identify the following four animals (A, B, C and D) given below. Which one of these is not correctly identified in the option given along with its correct taxonomic group and their common name ?



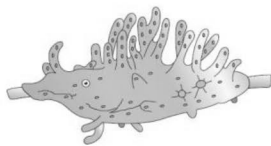
(A)



(B)



(C)



(D)

Options :-

	Fig.	Name of animal	Taxonomic group	Common Name
(1)	B	<i>Adamsia</i>	Ctenophora	Star coral
(2)	D	<i>Spongilla</i>	Porifera	Fresh water sponge
(3)	C	<i>Aurelia</i>	Coelenterata	Jelly fish
(4)	A	<i>Ensporgia</i>	Porifera	Bath sponge

36. How many organism are related with Echinodermata phylum?
Star fish, Sea-urchin, Sea-lily, Sea-mouse, Sea-hare, Sea-cucumber, Brittle star, Sea-potato, Sea-squirt, Sea-fan, Sea-pen
(1) 4 (2) 5
(3) 6 (4) 7
37. Which of the following unicellular organism has a macronucleus for trophic function and one or more micronuclei for reproduction?
(1) *Trypanosoma* (2) *Paramoecium*
(3) *Euglena* (4) *Amoeba*
38. Which of the following shows the sexual dimorphism?
(1) *Hydra* & *Ascaris*
(2) *Hydra* & *Macaca*
(3) *Ascaris* & *Pheretima*
(4) *Ascaris* & *Macaca*

39. Which one of the following features is common in - silverfish, scorpion, dragonfly and prawn ?
(1) Three pairs of legs and segmented body
(2) Chitinous cuticle and two pairs of antennae
(3) Jointed appendages and chitinous exoskeleton
(4) Cephalothorax involves
40. In which animal nerve cell is present but brain is absent?
(1) Sponge (2) Earthworm
(3) Cockroach (4) *Hydra*
41. Which group of vertebrates have characteristic features the presence of feathers and most of them can fly ?
(1) Mammals (2) Fishes
(3) Reptiles (4) Birds
42. Which class name refers to their creeping or crawling mode of locomotion (Latin, *reperere* or *reptum*, to creep or crawl)?
(1) Aves (2) Mammalia
(3) Amphibia (4) Reptilia
43. Which one of the following is not a living fossil ?
(1) *Peripatus*
(2) King crab
(3) *Sphenodon*
(4) *Archaeopteryx*
44. Body is divisible into head and trunk in?
(1) Lizard (2) Frog
(3) Peacock (4) Platypus
45. The evidence for the origin of birds from reptiles is the presence in them of -
(1) feathers (2) scales
(3) claws (4) hairs
46. In which one of the following groups all animals are hermaphrodite?
(1) *Hydra*, *Ascaris*, *Pheretima*
(2) *Hydra*, *Homo sapiens*, Leech
(3) Tapeworm, Toad, Starfish
(4) *Hydra*, Leech, Tapeworm

47. Given below are two statements:

Statement-I : The most distinct feature of echinoderms is the presence of water canal system.

Statement-II : Echinodermata exhibits radial or bilateral symmetry depending on the stage.

In the light of the above statements, choose the most appropriate answer from the options given below:

- (1) Both Statement-I and II are incorrect.
- (2) Statement-I is correct but statement-II is incorrect.
- (3) Statement-I is incorrect and Statement-II is correct.
- (4) Both Statement-I and Statement-II are correct.

48. Given below are two statements:

Statement-I : In cephalochordate notochord is persistent throughout their life.

Statement-II : Branchiostoma is an example of cephalochordata

In the light of the above statements, choose the most appropriate answer from the options given below:

- (1) Both Statement-I and II are incorrect.
- (2) Statement-I is correct but statement-II is incorrect.
- (3) Statement-I is incorrect and Statement-II is correct.
- (4) Both Statement-I and Statement-II are correct.

49. Given below are two statements:

Statement-I : All chordates are vertebrates but all vertebrates are not chordates.

Statement-II : Sub phylum urochordata and cephalochordate are often referred as protochordata.

In the light of the above statements, choose the most appropriate answer from the options given below:

- (1) Both Statement-I and II are incorrect.
- (2) Statement-I is correct but statement-II is incorrect.
- (3) Statement-I is incorrect and Statement-II is correct.
- (4) Both Statement-I and Statement-II are correct.

50. Given below are two statements; one is labelled as Assertion (A) and the other is labelled as Reason(R).

Assertion (A) : Water vascular system helps in locomotion, capture and transport of food and respiration.

Reason (R) : The presence of water vascular system is most unique feature of porifera.

In the light of the above statements, choose the correct answer from the options given below :

- (1) Both (A) & (R) are correct but (R) is the not correct explanation of (A).
- (2) (A) is correct but (R) is not correct.
- (3) (A) is not correct but (R) is correct.
- (4) Both (A) & (R) are correct and (R) is the correct explanation of (A).

EXERCISE-III

ANSWER KEY

Question	1	2	3	4	5	6	7	8	9	10	11	12	13	14	15
Answer	4	4	3	4	4	3	3	2	2	3	3	3	2	2	4
Question	16	17	18	19	20	21	22	23	24	25	26	27	28	29	30
Answer	2	2	1	2	3	2	3	4	4	1	3	3	3	3	4
Question	31	32	33	34	35	36	37	38	39	40	41	42	43	44	45
Answer	3	3	3	3	1	2	2	4	3	4	4	4	4	2	2
Question	46	47	48	49	50										
Answer	4	3	4	3	2										