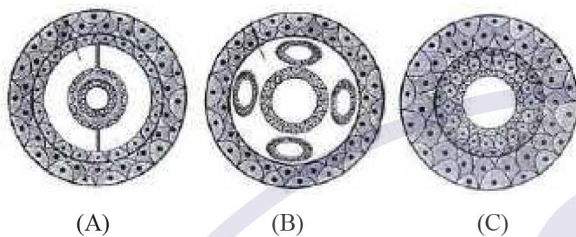


# EXERCISE

## INTRODUCTION

1. Identify the given diagram A, B and C for phylums:-



1	A	Platyhelminthes	B	Aschelminthes	C	Annelida
2	A	Platyhelminthes	B	Annelida	C	Aschelminthes
3	A	Annelida	B	Platyhelminthes	C	Aschelminthes
4	A	Annelida	B	Aschelminthes	C	Platyhelminthes

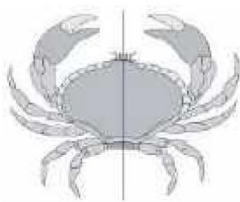
2. Consider the following four statements (a-d) and select the option which includes all the correct ones only :-

- (a) All members of animalia are multicellular.
- (b) In sponges the cells are arranged as loose cell aggregates
- (c) Platyhelminthes exhibit cellular level of organisation
- (d) All multicellular animals do not exhibit the same pattern of organisation of cells

**Options :**

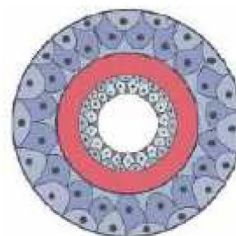
- (1) Statements (b), (c) and (d)
- (2) Statements (a), (b)
- (3) Statements (c), (d)
- (4) Statements (a), (b) and (d)

3. Identify the symmetry shown below as well as the related explanation and select the right option for the two together :-



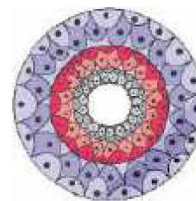
	Symmetry	Explanation
1	Asymmetrical	Any plane that passes through the centre does not divide them equal halves
2	Radial	The body can be divided into identical left and right halves in only one plane
3	Bilateral	Any plane pass through the central axis of the body divides the organism into two identical halves
4	Bilateral	The body can be divided into identical left and right halves in only one plane

4. Given diagram below is the body organisation of animal, select the correct animal



- (1) Insect
- (2) *Ascaris*
- (3) *Taenia*
- (4) *Physalia*

5. The cross section of animal body is given below:



Which of the following group will possess the above cross section :-

- (1) *Platyhelminthes*
- (2) *Ctenophora*
- (3) *Aschelminthes*
- (4) *Annelida*

6. Animals are classified on the basis of :-

- (1) Arrangement of cells
- (2) Body symmetry
- (3) Nature of coelom
- (4) All of these

# ANIMAL KINGDOM

7. During the embryonic development, coelom formed from blastocoel is :-  
 (1) Pseudocoel (2) Schizocoel  
 (3) Enterocoel (4) Hemocoel
8. Which arrangement is in correct ascending order :-  
 (1) Species < genus < order < family  
 (2) Genus < species < family < order  
 (3) Order < family < Genus < species  
 (4) Species < genus < family < order

## PROTOZOA

9. Protozoans are believed to be primitive relatives of animals because :-  
 (1) They are heterotrophs and live as predator or parasites.  
 (2) They are found in fresh water as well as in marine environments  
 (3) Pellicle makes their body flexible  
 (4) They can reproduce asexually and sexually
10. Find out the correct match from the following table

	Column-I	Column-II	Column-III
i	<i>Plasmodium</i>	Amoeboid protozoan	Malaria
ii	<i>Trypanosoma</i>	Flagellated protozoan	Sleeping sickness
iii	<i>Paramecium</i>	Ciliated protozoan	Gullet

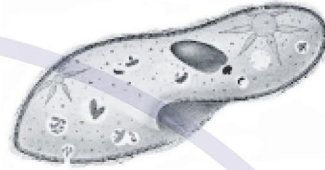
- (1) i only (2) i and ii (3) iii only (4) ii and iii

11. Exoskeleton of silica is found in which protozoan :-  
 (1) Amoeba (2) Foraminiferans  
 (3) Radiolarians (4) Paramecium
12. Identify the correct match from the column-I, II and III :-

	Column-I	Column-II	Column-III
A	<i>Leishmania donovani</i>	a Chagas disease	i Termites
B	<i>Trichonympha</i>	b Kala-azar	ii Silk worm
C	<i>Nosema</i>	c Glucosidases	iii Bug
D	<i>Trypanosoma Cruzi</i>	d Pebrine	iv Sand fly

- (1) B-a-i A-b-iv C-d-ii D-c-iii  
 (2) A-b-iv B-c-i C-d-ii D-a-iii  
 (3) A-b-iii B-c-ii C-d-i D-a-iv  
 (4) B-b-iv A-c-i C-a-ii D-a-iii

13. *Entamoeba* differs from Amoeba in the absence of :-  
 (1) Food vacuole (2) Pseudopodia  
 (3) Contractile vacuole (4) Nucleus
14. Identify the given protozoan with type of sexual reproduction in it and select the right option for the two together :-



	Protozoan	Sexual reproduction
(1)	<i>Paramecium</i>	Transverse Binary fission
(2)	<i>Euglena</i>	Longitudinal Binary fission
(3)	<i>Euglena</i>	Conjugation
(4)	<i>Paramecium</i>	Conjugation

15. Which of the following character is found in all protozoans?  
 (1) Locomotory organ  
 (2) Contractile vacuole  
 (3) Holozoic nutrition  
 (4) Eukaryotic organisation
16. Which of the following is characteristic feature of Rhizopods (Sarcodins)?  
 (1) Cilia (2) Food vacuole  
 (3) Pseudopodia (4) Pellicle
17. Match the column-I with column-II and select the correct answer :-

### Column-I

### Column-II

- |                                |                   |
|--------------------------------|-------------------|
| A. <i>Giardia intestinalis</i> | i. Texas fever    |
| B. <i>Leishmania tropica</i>   | ii. Sterility     |
| C. <i>Babesia</i>              | iii. Diarrhoea    |
| D. <i>Monocystis</i>           | iv. Oriental sore |

- (1) A-iii, B-ii, C-i, D-iv  
 (2) A-ii, B-iv, C-i, D-iii  
 (3) A-iii, B-iv, C-i, D-ii  
 (4) A-i, B-iv, C-iii, D-ii

- 18.** Which of the following is the main function of contractile vacuole ?  
 (1) Digestion  
 (2) Respiration  
 (3) Reproduction  
 (4) Osmoregulation
- 19.** In which of the following class of protozoa, process of conjugation takes place ?  
 (1) Sarcodina  
 (2) Rhizopoda  
 (3) Ciliata  
 (4) Sporozoa
- 20.** Which of the following is intermediate host of *Trypanosoma cruzi*?  
 (1) *Phlebotomus*  
 (2) *Glossina*  
 (3) *Culex*  
 (4) *Triatoma*
- 21.** Micronucleus of *Paramecium* is responsible for:  
 (1) Metabolic activities  
 (2) Reproductive activities  
 (3) Respiratory activities  
 (4) All of the above
- 22.** In which of the following locomotion does not occur?  
 (1) *Amoeba*  
 (2) *Plasmodium*  
 (3) *Paramecium*  
 (4) All of the above
- 23.** In which of the following animal, body shape continuously change ?  
 (1) *Paramecium*  
 (2) *Euglena*  
 (3) *Plasmodium*  
 (4) *Amoeba*
- 24.** Which organism is considered as of slipper animalcule?  
 (1) *Amoeba* (2) *Euglena*  
 (3) *Trypanosoma* (4) *Paramecium*
- 25.** Contractile vacuole of *Amoeba* is analogous to :-  
 (1) Typhlosole of earthworm  
 (2) Sweat gland of human  
 (3) Uriniferous tubules of frog and man  
 (4) Gastrovascular cavity of *Hydra*
- 26.** In which of the animal dimorphic nucleus is found ?  
 (1) *Amoeba proteus*  
 (2) *Trypanosoma gambiense*  
 (3) *Plasmodium vivax*  
 (4) *Paramecium caudatum*
- 27.** Which of the following unicellular organism has a macronucleus for trophic function and one micronuclei for reproduction ?  
 (1) *Trypanosoma*  
 (2) *Paramecium*  
 (3) *Euglena*  
 (4) *Amoeba*
- 28.** Holophytic nutrition is found in  
 (1) *Amoeba*  
 (2) *Giardia*  
 (3) 1 and 2  
 (4) *Euglena*
- 29.** Kala azar is transmitted by :  
 (1) Tse Tse fly  
 (2) Dragon fly  
 (3) Sand fly  
 (4) Fruit fly
- 30.** Sleeping sickness is caused by  
 (1) *Trypanosoma gambiense*  
 (2) *Trypanosoma rangeli*  
 (3) *Trypanosoma brucei*  
 (4) *Trypanosoma cruzi*

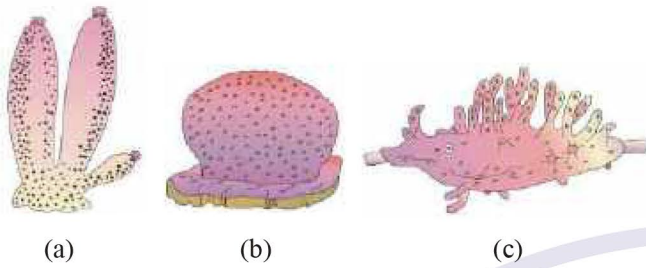
**PORIFERA**

- 31.** Cellular grade of organisation is found in :-  
 (1) Sponges  
 (2) Coelentrates  
 (3) Platyhelminthes  
 (4) Ctenophora
- 32.** In sponges water enters through minute pores (A) in the body wall into a central cavity (B) from where it goes out through the (C) :-

1	A - Osculum	B - Spongocoel	C - Ostia
2	A - Ostia	B - Gastrovascular cavity	C - Osculum
3	A - Ostia	B - Spongocoel	C - Osculum
4	A - Ostia	B - Osculum	C - Gastrovascular cavity

## ANIMAL KINGDOM

33. Given below are the three figure of sponges. Which of the following sponges are found in fresh water:-



Select the correct option

- (1) Only a (2) Only c  
(3) a and b (4) a and c
34. The members of phylum porifera are called sponges, having numerous distinguishable character, but which of the following considered as their peculiar character ?  
(1) These are diploblastic animals  
(2) Most members are marine and some are fresh water  
(3) Choanocytes line the spongocoel  
(4) Intracellular digestion
35. Which of the following characteristics is not associated with sponges ?  
(1) Sponges have a water transport or canal system.  
(2) Sponges reproduce asexually by fragmentation and sexually by formation of gametes.  
(3) They are generally marine and mostly asymmetrical animals  
(4) Sponges show tissue level of organisation
36. The skeleton of animals of porifera consists of :-  
(1) Spicules  
(2) Spongin fibres  
(3) Both 1 and 2  
(4) Chitinous exoskeleton
37. *Spongilla* and *Euspongia* are members of phylum porifera, bear which of the following characters ?  
(1) They have a water transport or canal system  
(2) These are hermaphrodites with internal fertilisation  
(3) Both 1 and 2  
(4) These are exclusively marine

38. The canal system is characteristic feature of -  
(1) sponges (2) helminthes  
(3) echinoderms (4) coelenterates

39. *Sycon* belongs to a group of animals, which are best described as :-  
(1) Unicellular or acellular  
(2) Multicellular without any tissue organization  
(3) Multicellular with a gastrovascular system  
(4) Multicellular having tissue organization, but no body cavity

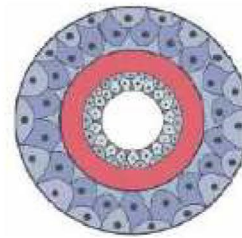
40. The middle layer in body wall of porifera is  
(1) Mesoderm (2) Mesenchyme  
(3) Mesolea (4) Mesentery

41. After drying, a bath sponge contains  
(1) hold fast (2) Tentacles  
(3) spicules (4) spongin fibre

42. Osculum occurs in  
(1) Star fish (2) Ray fish  
(3) Hydra (4) Sponge

### COELENTERATA, CTENOPHORA

43. The Cross section of animal body is given below:-



Which of the following group will satisfy the above cross section :-

- (1) Coelentrata (2) *Platyhelminthes*  
(3) *Aschelminthes* (4) *Annelida*
44. Radial symmetry is found in :-  
(a) Coelentrates  
(b) Ctenophore  
(c) Echinoderms  
(1) Only a (2) Only b  
(3) Only c (4) All a,b and c
45. Cnidarians and ctenophores resemble in their :-  
(1) Levels of organisation  
(2) Symmetry  
(3) Diploblastic organisation  
(4) All of the above

## ANIMAL KINGDOM

46. Consider the following statements :-  
*Obelia* typically has  
A. A radially symmetrical body  
B. A gastrovascular body  
C. Both a polyp and medusoid form  
(1) A, B and C are correct  
(2) B and C are correct  
(3) A and B are correct  
(4) A and C are correct
47. Consider the following characteristics of organisms:-  
A. Diploblastic body  
B. Possessing Medusoid form  
C. Presence of both intracellular and extracellular digestion.  
Which of the above are characteristics of Hydra.  
(1) A and B (2) B and C  
(3) A and C (4) A, B and C
48. Consider the following statements :-  
*Aurelia* typically has  
A. A radially symmetrical body  
B. A gastrovascular body  
C. Both a polyp and medusoid form  
(1) A, B and C are correct  
(2) B and C are correct  
(3) A and B are correct  
(4) A and C are correct
49. Which of the following pairs of animals belong to same phylum ?  
(1) Sea anemone, Corals  
(2) Sea fan, sea walnut  
(3) Sea pen, scypha  
(4) *Nereis*, *Ascaris*
50. How many in the given examples of animals are coelenterates ?  
*Physalia*, *Obelia*, *Planaria*, *Pennatula*,  
*Gorgonia*, *Pleurobrachia*, *Meandrina* and *Nereis*  
(1) Three (2) Four  
(3) Five (4) Six
51. Read the following (a-d) four statements for Ctenophora :-  
(a) Diploblastic with tissue level of organisation  
(b) The body bears eight external row of ciliated comb plates  
(c) Digestion is both extracellular and intracellular  
(d) Reproduction takes place only by sexual means  
How many of the above statements are correct  
(1) Four (2) Three  
(3) Two (4) One
52. Which of the following is correct for medusa ?  
(1) Sessile (2) Cylindrical  
(3) Present in Hydra (4) Free-swimming
53. Which one of the following is a radially symmetrical, diploblastic animal with blind sac body plan ?  
(1) *Asterias* (2) *Spongilla*  
(3) *Earthworm* (4) *Hydra*
54. Which of the following belongs to Phylum Coelenterata ?  
(1) Star fish (2) Sea fan  
(3) Silver fish (4) Cuttle fish
55. Alternation of generation is found in :-  
(1) Housefly (2) *Obelia*  
(3) *Drosophila* (4) All of these
56. Which characteristic is true for ***Obelia*** ?  
(1) Metagenesis (2) Morphogenesis  
(3) Apolysis (4) Pedogeny
57. Which of the following animals have scattered cells with cell - tissue grade organisation ?  
(1) Sponge (2) ***Hydra***  
(3) Liver fluke (4) ***Ascaris***
58. In ***Hydra***, waste material of food digestion and nitrogenous waste material removed from :-  
(1) Mouth and mouth  
(2) Body wall and body wall  
(3) Mouth and body wall  
(4) Mouth and tentacles
59. Which of the following does not belongs to phylum coelenterata ?  
(1) Sea pen (2) Sea anemone  
(3) sea cucumber (4) sea fan

## ANIMAL KINGDOM

- (1) Porifera (2) Coelenterata  
(3) Nematodes (4) Annelida

### PLATYHELMINTHES, ASCHELMINTHES, ANNELIDA

- 61.** Pseudocoelom is found in :-  
(1) Ctenophore (2) Platyhelminthes  
(3) Aschelminthes (4) Both 2 and 3
- 62.** Bilaterally symmetrical, triploblastic and acoelomate animals :-  
(1) Coelenterates (2) Ctenophore  
(3) Platyhelminthes (4) Aschelminthes
- 63.** Which one of the following non-chordate is a protostomic, bilaterally symmetrical and schizocoelomate ?  
(1) *Nereis* (2) *Ctenoplana*  
(3) *Wuchereria* (4) *Taenia*
- 64.** Creatures with single opening serving both as mouth and anus is found in :-  
(1) Coelenterates & Aschelminthes  
(2) Platyhelminthes & Ctenophora  
(3) Coelenterate & Porifera  
(4) All of the above
- 65.** The biological name and their popular common name of animals are given below, select the correctly matched among following :-  
(1) *Ancylostoma* - Hook worm  
(2) *Obelia* - Jelly fish  
(3) *Physalia* - Spanish man of war  
(4) *Meandrina* - Sea fan
- 66.** Which one of the following phyla is correctly matched with its general characteristics ?  
(1) Porifera - Cellular level of organisation and external fertilisation  
(2) Coelenterata - Diploblastic and Coelomates  
(3) Aschelminthes - Coelomates and Dioecious  
(4) Chordata - Coelomates and closed circulatory system
- 67.** The digestive tract of Nematodes can be represented as :-  
(1) Incomplete type (2) Tube within a tube  
(3) Blind sac (4) Pseudocoel type
- have triploblastic members only :-  
(1) *Ctenoplana*, *Taenia*, *Planaria*  
(2) *Euspongia*, *Physalia*, Sea anemone  
(3) *Wuchereria*, *Ascaris*, *Taenia*  
(4) Frog, *Ctenoplana*, *Hydra*
- 69.** In which of the following, flat worm shows resemblance with round worm ?  
(1) Body plan  
(2) Level of organisation  
(3) Coelom  
(4) Symmetry
- 70.** In the evolutionary history of the animal kingdom, which of the following features have evolved for the first time in phylum Annelida ?  
A. Metameric segmentation  
B. Organ level of organisation  
C. Closed circulatory system  
D. True coelom  
E. Bilateral symmetry  
Select the correct answer  
(1) B and E  
(2) A, B, C and D  
(3) A, C and D  
(4) Only A and B
- 71.** In which of the following, round worms shows resemblance with annelida ?  
(1) Symmetry  
(2) Level of organisation  
(3) Excretory organ  
(4) 1 and 2 both
- 72.** Select the set of organisms which have metamerism :-  
(1) *Physalia*, Liver Fluke, Leech  
(2) *Gorgonia*, *Aedes*, Chiton  
(3) *Hydra*, *Aedes*, Sea-anemone  
(4) *Pheretima*, *Nereis*, *Hirudinaria*
- 73.** How many animals in the list given below have pseudocoelom ?  
*Taenia*, *Fasciola*, *Sycon*, *Ctenoplana*, *Ascaris*, *Wuchereria*, *Ascidia*, *Branchiostoma*, *Ancylostoma*, *Aplysia*.  
(1) Three (2) Four  
(3) Five (4) Six

## ANIMAL KINGDOM

- (1) Ctenophore                      (2) Annelida  
(3) Aschelminthes                  (4) Platyhelminthes
- 75.** Which animal possess lateral appendages parapodia, which help in swimming ?  
(1) *Nereis*                              (2) *Octopus*  
(3) *Prawn*                                (4) *Antedon*
- 76.** What is common to Earthworm, *Nereis* and Leech?  
(1) Ventral nerve cord  
(2) Metamerism  
(3) Coelomate  
(4) All of the above
- 77.** Which of the following pairs are correctly matched?  
(A) Flame cells - *Taenia*, *Fasciola*  
(B) Notochord - *Balanoglossus*  
(C) Metagenesis - *Physalia* and *Obelia*  
(D) Radula - *Pila*  
(1) A, B and C  
(2) Only A and C  
(3) A, C and D  
(4) Only A and D
- 78.** What is true about *Ascaris*, *Neries*, *Wuchereria* and *Hirudinaria* ?  
(1) Acoelom  
(2) Pseudocoelom  
(3) Metamerism  
(4) Organ system level of organisation
- 79.** Which one is not a platyhelminthes ?  
(1) Tape worm                      (2) Liver fluke  
(3) Hook worm                      (4) *Planaria*
- 80.** Set of organism which are flatworms :-  
(1) Liverfluke, *Planaria*  
(2) *Planaria*, *Ascaris*  
(3) *Ascaris*, *Anclyoostoma*  
(4) Sandworm, *Planaria*
- 81.** Which one of the following is a matching pair of a body feature and the animal possessing it?  
(1) Canal system - *Asterias*  
(2) Metagenesis - *Nereis*  
(3) Dorsal nerve cord - *Pheretima*  
(4) Muscular pharynx - *Ascaris*
- often female is longer than male in :-  
(1) Earthworm                      (2) Leech  
(3) *Ascaris*                              (4) Both 2 and 3
- 83.** Hirudin is present in the saliva of :-  
(1) Leech                                  (2) Earthworm  
(3) Scorpion                              (4) Cobra
- 84.** Dioecious plantyhelminthe among the following is ?  
(1) *Schistosoma*                      (2) *Dugesia*  
(3) *Wuchereria*                      (4) *Hirudinaria*
- 85.** Which of the following organisms is pseudocoelomate ?  
(1) Hookworm                      (2) Liver fluke  
(3) Jelly fish                              (4) Leech
- 86.** Solenocytes occur in :-  
(1) Platyhelminthes                  (2) Arthropoda  
(3) Annelida                              (4) Aschelminthes
- 87.** Practical purpose of taxonomy or classification :-  
(1) Facilitate the identification of unknown species.  
(2) Explain the origin of organisms.  
(3) To know the evolutionary history  
(4) Identification of medicinal plants
- 88.** Similarity in ***Ascaris lumbricoides*** and ***Anopheles stephensi*** :  
(1) Sexual dimorphism  
(2) Metamerism  
(3) Anaerobic respiration  
(4) Endoparasitism
- 89.** In contrast to Annelid the Platyhelminths show –  
(1) Absence of body cavity  
(2) Presence of pseudocoel  
(3) Radial symmetry  
(4) Bilateral symmetry
- 90.** Which organism resides in Lymph nodes ?  
(1) ***Taenia***                                  (2) ***Wuchereria***  
(3) ***Plasmodium***                      (4) ***Diplococcus***
- 91.** Adult ***Wuchereria bancrofti*** attacks  
(1) Nervous system  
(2) Lymph vessels  
(3) Muscular system  
(4) Blood vessels

# ANIMAL KINGDOM

- (1) Sucking
- (2) Scraping
- (3) Absorption through integument
- (4) Autotrophic

93. Tapeworm does not possess digestive system as it :-

- (1) does not require solid food
- (2) Obtains food through general surface
- (3) Does not require food
- (4) Lives in intestine

94. Anus is absent in

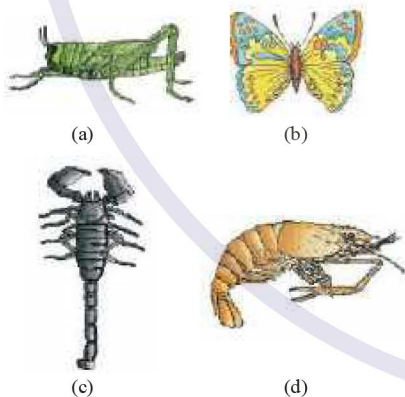
- (1) **Fasciola**                      (2) **Pheretima**
- (3) **Periplaneta**                (4) **Unio**

## ARTHROPODA

95. Select the group of organisms given below those have triploblastic members only :-

- (1) *Ctenoplana*, *Taenia*, *Planaria*
- (2) *Euspongia*, *Physalia*, Sea anemone
- (3) *Wuchereria*, *Culex*, *Apis*
- (4) *Aedes*, *Ctenoplana*, *Hydra*

96. The four sketches (a,b,c and d) given below, represent four animals. Which of these is correctly identified in the options given, along with its correct type and phylum :-



		Animal	Type	Phylum
1	(d)	Scorpion	Living	Mollusca
2	(a)	<i>Locusta</i>	Gregarious pest	Arthropoda
3	(b)	Butter	Vector	Arthropoda
4	(c)	Prawn	Economical insect	Arthropoda

given animals is correct ?

- (1) Sea squid shows metamerism
- (2) Flat worms are pseudocoelomates
- (3) Insects are coelomates
- (4) Adult Star Fish is bilaterally symmetrical

98. Which of the following is an example of an insect ?

- (1) Star fish                      (2) Cuttle fish
- (3) Silver fish                 (4) Devil fish

99. Which of the following belongs to Phylum Arthropoda ?

- (1) Star fish                      (2) Gold fish
- (3) Silver fish                 (4) Cuttle fish

100. Economically important insect among the following is ?

- (1) *Lepisma*                      (2) *Apis*
- (3) *Aphid*                        (4) *Aedes*

101. Which of the following is *not* an insect ?

- (1) Ant                              (2) Mosquito
- (3) Spider                        (4) Locusts

102. Given below are four matchings of an animal and its kind of respiratory organ :

- A. Silver fish – trachea
- B. Scorpion – book lung
- C. Prawn – gills
- D. Earthworm – lungs

The correct matchings are :-

- (1) A and D                      (2) A, B and C
- (3) B and D                      (4) C and D

103. Three pairs of legs are found in :-

- (1) Crab                          (2) Spider
- (3) Locust                        (4) Planaria

104. Green glands found in some Arthropods they take part in

- (1) Excretion
- (2) Respiration
- (3) Digestion
- (4) Both 1 and 2

105. Which disease is spread by female **Culex** ?

- (1) Malaria                      (2) Pneumonia
- (3) Typhoid                      (4) Filaria



- (1) Wings
- (2) Antennae
- (3) Compound eyes
- (4) 3 pairs of Legs

**MOLLUSCA, ECHINODERMATA**

**107.** All animals of this phylum are exclusively marine:-

- (1) Mollusca
- (2) Ctenophora
- (3) Echinodermata
- (4) Both 2 and 3

**108.** The members of which groups are exclusively marine:

- (a) Ctenophora
- (b) Echinodermata
- (c) Protochordata
- (1) Only a
- (2) Only b
- (3) Only a and b
- (4) All a,b and c

**109.** Which of the following is incorrect for *Neopilina*?

- (1) Connecting link between Annelida and Arthropoda
- (2) Segmented mollusc
- (3) Larva - Trochophora
- (4) Marine

**110.** Consider the following four statements (a-d) and select the option which includes all the correct ones only :-

- (a) The body of arthropoda is covered by chitinous exoskeleton
- (b) Molluscs are terrestrial or aquatic
- (c) Prawn contains a file-like rasping organs for feeding, called radula
- (d) The body of mollusc is divided into head, thorax and abdomen
- (1) Statements (b), (c) and (d)
- (2) Statements (a), (b)
- (3) Statements (c), (d)
- (4) Statements (a), (c) and (d)

**111.** Find out the correct match from the following table:-

	Column-I	Column-II	Column-III
i	<i>Pinctada</i>	<i>Pearl oyster</i>	<i>Mollusca</i>
ii	<i>Chaetopleura</i>	<i>Chiton</i>	<i>Annelida</i>
iii	<i>Pila</i>	<i>Tusk shell</i>	<i>Mollusca</i>

- (1) Only i
- (2) i and ii
- (3) iii only
- (4) ii and iii

protostomic, bilaterally symmetrical and schizocoelomate ?

- (1) *Dentalium*
- (2) *Ctenoplana*
- (3) *Wuchereria*
- (4) *Taenia*

**113.** Which one of the statement is not true in case of Echinoderms?

- (1) Locomotion by water vascular system.
- (2) Presence of Blind sac body plan.
- (3) Mouth on lower side.
- (4) Presence of calcareous plate.

**114.** The animals with bilateral symmetry in young stage and radial pentamerous symmetry in the adult stage, belong to the phylum –

- (1) Mollusca
- (2) Cnidaria
- (3) Echinodermata
- (4) Annelida

**115.** Which is a characteristic feature of Echinodermata?

- (1) Vascular system
- (2) Bilateral symmetry
- (3) Radial canal
- (4) Water vascular system

**116.** Trochophore larva occurs in

- (1) Annelida and Porifera
- (2) Coelenterata and Annelida
- (3) Mollusca and Coelenterata
- (4) Annelida and Mollusca

**117.** An animal having unsegmented coelom superficial radial symmetry in adult but bilateral symmetry in larva is member of

- (1) Mollusca
- (2) Echinodermata
- (3) Arthropoda
- (4) Annelida

**118.** Phylum Annelida resembles Mollusca in :-

- (1) Level of organisation
- (2) Metameric segmentation
- (3) Open type circulation
- (4) Calcareous shell

**119.** In which phylum is Water Vascular System found ?

- (1) Protozoa
- (2) Arthropoda
- (3) Porifera
- (4) Echinodermata

## ANIMAL KINGDOM

deuterostome and enterocoelous coelomate ?

- (1) ***Pila*** (2) ***Ascaris***  
(3) ***Aphrodite*** (4) ***Asterias***

- 121.** Echinoderms are Heartless, brainless and headless yet from evolutionary point of view, they have been placed on the top of the invertebrate phyla because of the presence in them of
- (1) power of reproduction
  - (2) great power of regeneration
  - (3) exclusively marine
  - (4) enterocoel

### UROCHORDATA, CEPHALOCHORDATA & PISCES

- 122.** Poison sting is found in :-

- (1) *Scoliodon* (2) *Exocoetus*  
(3) *Trygon* (4) *Catla*

- 123.** Which of the following is correct match of genetic name with it's common name ?

- (1) *Exocoetus* - flying frog  
(2) *Betta* - Fighting fish  
(3) *Toad* - Tree frog  
(4) *Pristis* - Electric fish

- 124.** Following statements are correct for which animal :-

- (a) Circular mouth  
(b) Body is devoid of scales and paired fins  
(c) Cranium and vertebral column are cartilaginous
- (1) *Petromyzon* (2) *Salpa*  
(3) Rohu (4) *Rana*

- 125.** *Branchiostoma* is a :-

- (1) Cephalochordate (2) Cyclostome  
(3) Hemichordate (4) Urochordate

- 126.** The cyclostomes are :-

- (1) Marine and non migratory  
(2) Fresh water form and non migratory  
(3) Marine and migrate to fresh water for spawning  
(4) Fresh water form and migrate to sea for spawning

- 127.** *Salpa* and *Doliolum* belong to :-

- (1) Cephalochordata (2) Hemichordata  
(3) Tunicata (4) Cyclostomata

common name :-

- (1) *Trygon* - dog fish  
(2) *Ascidia* - lancelet  
(3) *Pterophyllum* - flying fish  
(4) *Myxine* - hagfish

- 129.** Sharks do not have :-

- (1) Teeth (2) Claspers  
(3) Air bladder (4) Ventral mouth

- 130.** Shark, *Torpedo* (Electric ray) and *Trygon* (Sting ray) are fishes and belong to class:-

- (1) Cyclostomata (2) Chondrichthyes  
(3) Osteichthyes (4) Teleostomi

- 131.** Which of the following is not a characteristic of class chondrichthyes ?

- (1) Gill slits are separate and without operculum  
(2) They are predaceous  
(3) Air bladder is present  
(4) Notochord is persistent throughout the life

- 132.** Following are few examples of bony fishes. Find out the marine bony fishes :-

- (1) Flying fish (2) *Hippocampus*  
(3) Both (1) & (2) (4) *Lebeo*

- 133.** Which one(s) is/are not cartilaginous fish ?

- (1) *Carcharodon* (Great white shark), *Trygon* (Sting ray)  
(2) *Exocoetus* (Flying fish), *Catla* (Katla), *Clarias* (Magur)  
(3) *Scoliodon* (Dog fish)  
(4) *Pristis* (Saw fish)

- 134.** In chordates the notochord is :-

- (1) Mesodermal and dorsal to nerve cord  
(2) Endodermal and dorsal to nerve cord  
(3) Mesodermal and ventral to nerve cord  
(4) Endodermal and ventral to nerve cord

- 135.**



Which of the following is a correct feature for animal?

- (1) It has four pairs of gills without operculum  
(2) It has claspers  
(3) Heart is three chambered  
(4) It has air bladder

# ANIMAL KINGDOM

- 136.** How many of the following are true fishes ?  
Dog fish, Saw fish, Flying fish, Fighting fish, Angel fish, Hagfish  
(1) 2            (2) 3            (3) 4            (4) 5

## AMPHIBIA, REPTILIA

- 137.** Which one is correct match of Lizard ?  
(1) *Calotes* - Tree lizard  
(2) *Chameleon* - Garden lizard  
(3) *Hemidactylus* - wall lizard  
(4) All
- 138.** What is common in birds and human ?  
(1) Both are dicondylic  
(2) Both are homothermal  
(3) Bipedal locomotion present  
(4) 2 and 3 both
- 139.** Select the correct statement for Aves  
(1) Feathers are present  
(2) Forelimbs are modified as wings  
(3) Both (1) and (2) correct  
(4) They are cold blooded
- 140.** Axolotl larva is the name of larva of  
(1) ***Amphioxus***            (2) Silkworm  
(3) ***Ambystoma***            (4) Round worm
- 141.** Most favourable land adaptation in reptiles is  
(1) Lungs            (2) Scales  
(3) Moist skin            (4) Pentadactyl limbs
- 142.** Retention of larval characters even after sexual maturity is called  
(1) Parthenogenesis            (2) Ontogenesis  
(3) Phyllogenesis            (4) Neoteny
- 143.** ***Ichthyophis*** belongs to  
(1) Amphibia            (2) Mollusca  
(3) Annelida            (4) Reptilia
- 144.** The glands present in the skin of frog are  
(1) Sweat and mammary glands  
(2) Sweat and sebaceous glands  
(3) Sweat and mucous glands  
(4) Mucous and poisonous glands
- 145.** Corpus callosum is found in the brain of  
(1) Elephant            (2) Pigeon  
(3) Crocodile            (4) Frog

- 146.** The type of dentition in Crocodile is  
(1) Acrodont            (2) Heterodont  
(3) Pleurodont            (4) Thecodont
- 147.** Jacobson's organ is the olfactory organ in ?  
(1) *Chelone*            (2) *Neophron*  
(3) *Hyla*            (4) All of the above
- 148.** Which of the following has thecodont dentition ?  
(1) Turtle            (2) Tortoise  
(3) Lizard            (4) Alligator
- 149.** Which of the following snakes is non-poisonous :  
(1) Cobra            (2) Krait  
(3) Viper            (4) Python
- 150.** Which of the following is a poisonous snake ?  
(1) *Eryx*            (2) *Naja*  
(3) Rate snake            (4) *Python*

## BIRDS, MAMMALS

- 151.** ***Archaeopteryx*** is :  
(1) A living fossil  
(2) A mammal  
(3) A connecting link between annelida and arthropoda  
(4) A connecting link between reptiles and birds
- 152.** Which of the following is an example of poisonous mammal :-  
(1) *Vipera*            (2) *Chelone*  
(3) Male platypus            (4) Whale
- 153.** Air sacs connected to lungs supplement respiration in :-  
(1) Birds            (2) Reptiles  
(3) Amphibians            (4) Mammals
- 154.** The most unique mammalian characteristic is :-  
(1) Two pairs of limbs  
(2) Mammary glands  
(3) Internal fertilisation  
(4) Four chambered heart
- 155.** Which of the following mammal is oviparous ?  
(1) *Ornithorhynchus*  
(2) *Delphinus*  
(3) *Felis*  
(4) *Canis*

# ANIMAL KINGDOM

- 156.** Which one of the following characters is not typical of the class Mammalia ?  
(1) Alveolar lungs  
(2) Ten pairs of cranial nerves  
(3) Seven cervical vertebrae  
(4) Thecodont dentition
- 157.** What is common between parrot, platypus and kangaroo ?  
(a) Ovoparity  
(b) Homoiothermy  
(c) Toothless jaws  
(d) Functional post-anal tail  
(1) a, b (2) b, d  
(3) b, c (4) a, b, c
- 158.** Which one of the following in birds, indicates their reptilian ancestry?  
(1) Scales on their hind limbs  
(2) Four-chambered heart  
(3) Eosinophils  
(4) Monocytes
- 159.** Which one of the following pairs of animals comprises 4 chambered heart?  
(1) Dog & Frog (2) Pigeon & Rabbit  
(3) Cat & Rohu (4) Pigeon & Snake
- 160.** Uricotelic mode of passing out nitrogenous wastes is found in :-  
(1) Reptiles and Birds  
(2) Birds and Annelids  
(3) Amphibians and Reptiles  
(4) Insects and Amphibians
- 161.** *Ornithorhynchus* is a  
(1) Duck (2) Dinosaur  
(3) Monotreme mammal (4) Fossil bird
- 162.** Which one is not exclusively marine ?  
(1) Seal (2) Walrus  
(3) Whale (4) Dolphin
- 163.** Mammals giving rise to immature young ones and nursing them in a pouch are  
(1) Monotremes (2) Marsupials  
(3) Primates (4) Carnivores
- 164.** Ear pinna is found in the  
(1) horse (2) pigeon  
(3) crocodile (4) frog
- 165.** The greatest evolutionary change that enabled the land vertebrates to be completely free from water, was the development of  
(1) four appendages  
(2) lungs  
(3) cleidoic eggs  
(4) four chambered heart
- 166.** Eggs of birds are  
(1) large, megalecithal, cleidoic  
(2) large, telolecithal, cleidoic  
(3) large, mesolecithal, cleidoic  
(4) small, megalecithal, cleidoic
- 167.** The character present in all birds, without exception, is :  
(a) Omnivory  
(b) Wings capable of flying  
(c) Beak without teeth  
(d) Eggs with calcareous shells  
(1) a, b (2) b, c (3) c, d (4) a, b, c
- 168.** Which of the following is an exclusive character of class Mammalia ?  
(1) Homoiothermy  
(2) Internal fertilization  
(3) Presense of a 4-chambered heart  
(4) Presence of a muscular diaphragm
- 169.** *Ornithorhynchus* and *Echidna* are examples of :-  
(1) Birds  
(2) Reptiles  
(3) Marsupial mammals  
(4) Prototherian mammals
- 170.** Oviparous mammals are :  
(1) Kangaroo  
(2) Duck bill platypus  
(3) Whale  
(4) Rabbit
- 171.** Which of the following is viviparous :  
(1) Running birds (2) Whales  
(3) Bats (4) Both (2) and (3)
- 172.** The eggs of eutherian mammals are  
(1) Mesolecithal type  
(2) Microlecithal type  
(3) Telolecithal type  
(4) Megalecithal type

# ANIMAL KINGDOM

173. Which one of the following lays eggs yet the female secretes milk ?

- (1) Bat (2) Kangaroo  
(3) Platypus (4) Ostrich

## ANSWER KEY

Que.	1	2	3	4	5	6	7	8	9	10	11	12	13	14	15
Ans.	4	4	4	4	1	4	1	4	1	4	3	2	3	4	4
Que.	16	17	18	19	20	21	22	23	24	25	26	27	28	29	30
Ans.	3	3	4	3	4	2	2	4	4	3	4	2	4	3	1
Que.	31	32	33	34	35	36	37	38	39	40	41	42	43	44	45
Ans.	1	3	2	3	4	3	3	1	2	2	4	4	1	4	4
Que.	46	47	48	49	50	51	52	53	54	55	56	57	58	59	60
Ans.	1	3	3	1	3	1	4	4	2	2	1	2	3	3	2
Que.	61	62	63	64	65	66	67	68	69	70	71	72	73	74	75
Ans.	3	3	1	2	1	4	2	3	4	3	4	4	1	4	1
Que.	76	77	78	79	80	81	82	83	84	85	86	87	88	89	90
Ans.	4	3	4	3	1	4	3	1	1	1	1	1	1	1	2
Que.	91	92	93	94	95	96	97	98	99	100	101	102	103	104	105
Ans.	2	3	2	1	3	2	3	3	3	2	3	2	3	1	4
Que.	106	107	108	109	110	111	112	113	114	115	116	117	118	119	120
Ans.	4	4	4	1	2	1	1	2	3	4	4	2	1	4	4
Que.	121	122	123	124	125	126	127	128	129	130	131	132	133	134	135
Ans.	4	3	2	1	1	3	3	4	3	2	3	3	2	3	4
Que.	136	137	138	139	140	141	142	143	144	145	146	147	148	149	150
Ans.	4	3	4	3	3	2	4	1	4	1	4	1	4	4	2
Que.	151	152	153	154	155	156	157	158	159	160	161	162	163	164	165
Ans.	4	3	1	2	1	2	2	1	2	1	3	4	2	1	3
Que.	166	167	168	169	170	171	172	173							
Ans.	1	3	4	4	2	4	2	3							